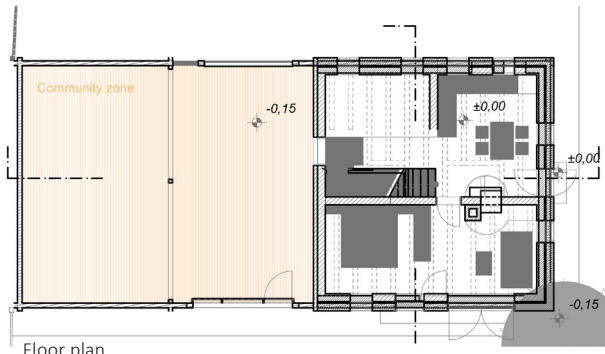


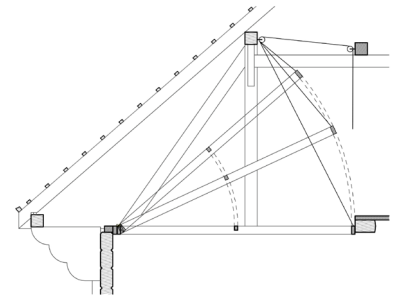
The conversion of the cultural hall of the barn aims to create an insulated interior environment which can be heated. This part of the barn is only to be used by visitors, giving an intermittent occupation pattern: it may be used for short periods (2-5 hours), followed by several days or weeks without further use. It was an important aim of the works to maintain the feel of the barn, both from the point of view of maintaining visual contact with its large loft space, and of keeping its wooden surface finishes visible. We used the new interventions as an opportunity place cultural objects and references in the hall.

The air-tight performance of the timber-framed walls is ensured with a nature-friendly sealing system. We placed a slab or ceiling at the top of the timber walls. The ceiling above the stage section is a foldable timber structure combined with transparent polycarbonate. Its structure reflects the pattern of coffered ceilings characteristic of Transylvanian churches (including that in Csíkdéle). Infrared heaters are installed in some of its rectangular panels, decorated with copies of ceiling paintings from Transylvanian churches. The other section of the ceiling is clad with reclaimed wooden planks, with a few polycarbonate windows lighting the loft area. The south gate is fitted with a removable wooden grid structure with polycarbonate windows and an opening door, whereas the northern gate – which is hardly used – is fitted with an opaque covering made with “runner rugs” characteristic of the local area. All of these elements are easily removable for the summer period, apart from the movable ceiling above the stage.



Floor plan

Longitudinal section

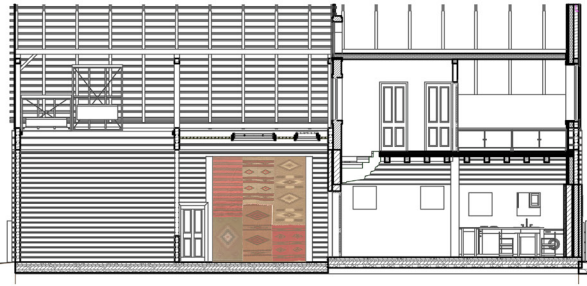
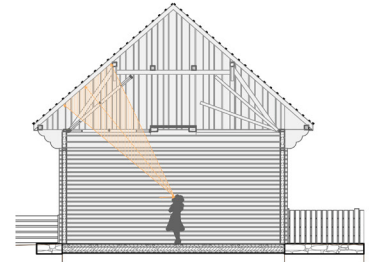


Adjustable thermal insulating panel (clear polycarbonate sheet)

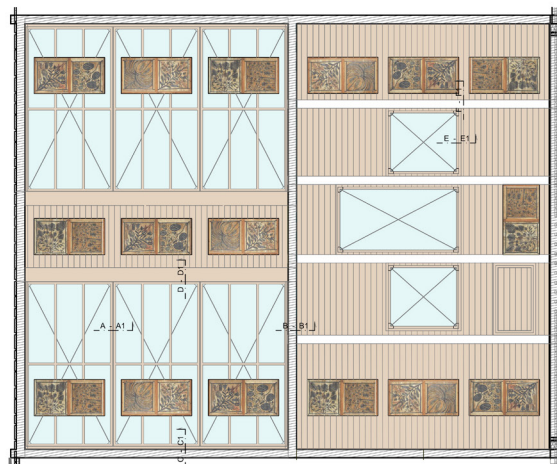
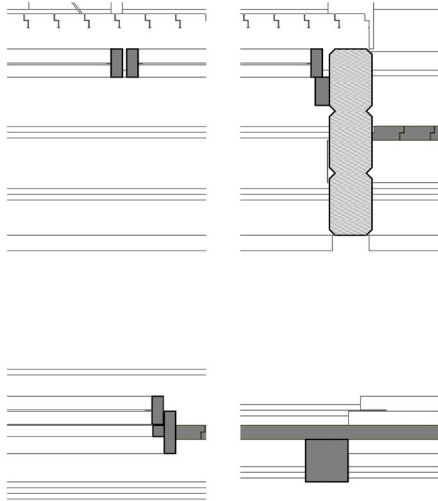
Sun study



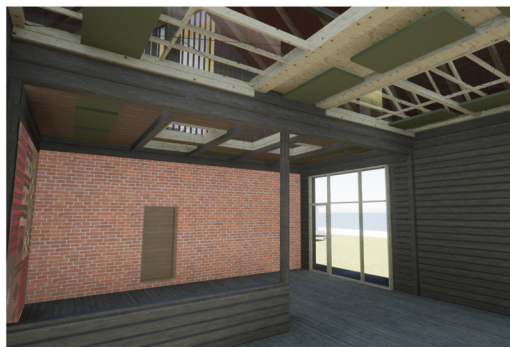
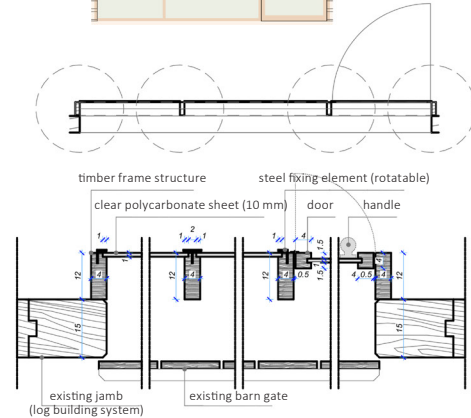
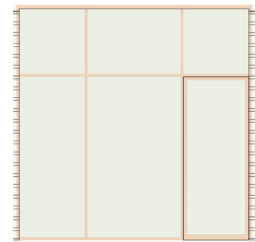
Visibility study



Coffered ceiling layout



Barn gate details



Recommendations from the artists

