

# Model project

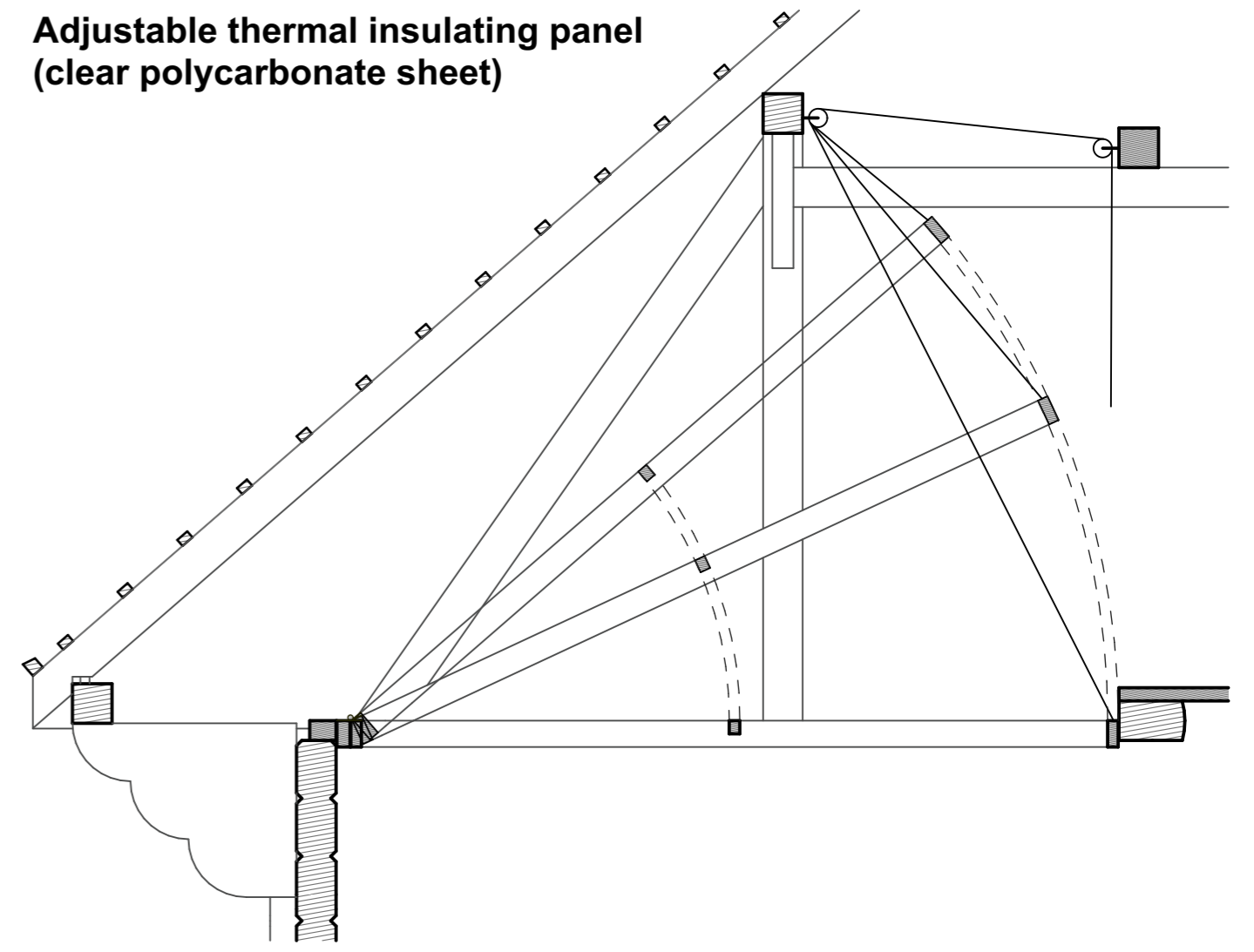
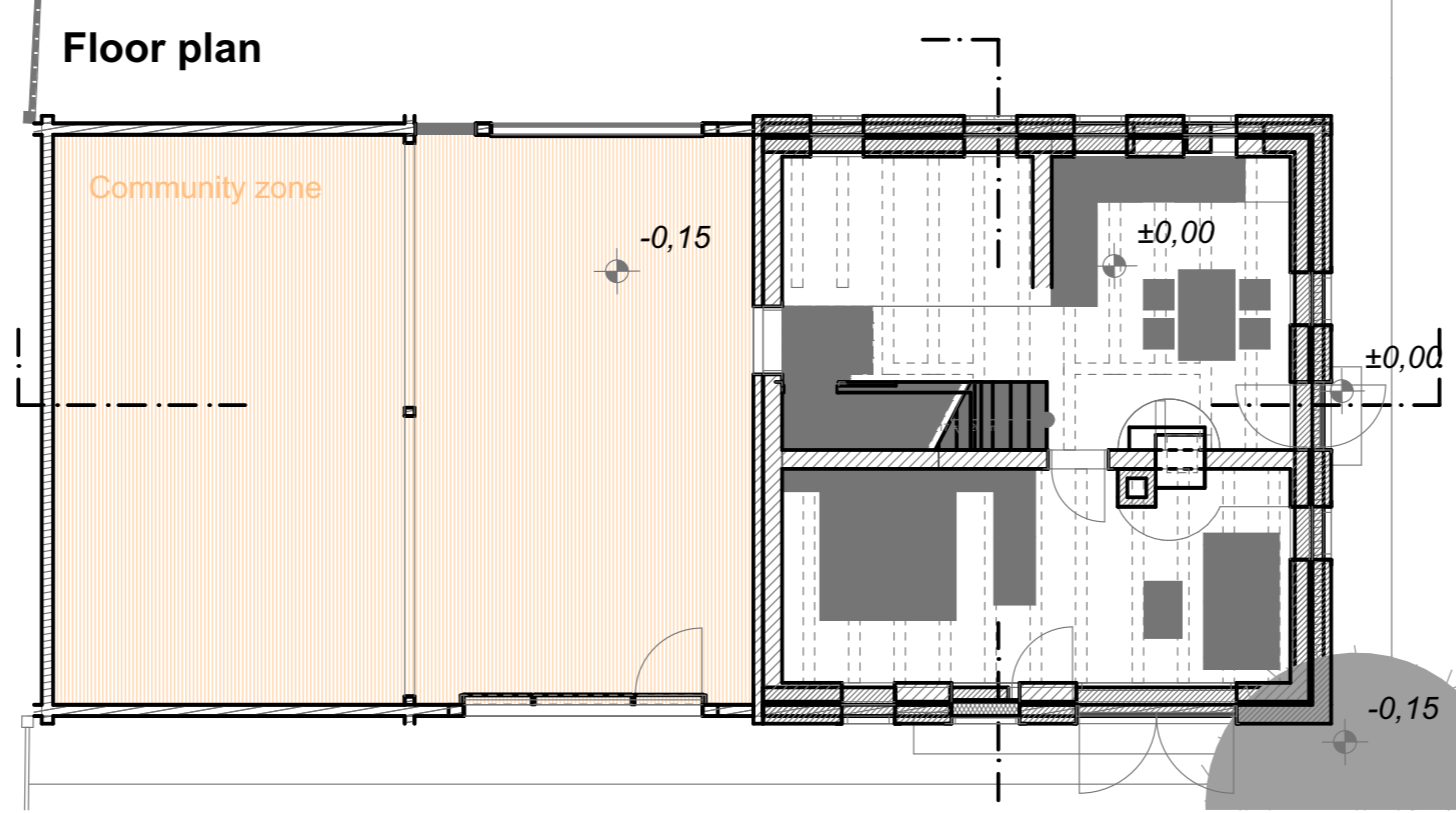
## Planning the winter utilization of a barn in Csikdelne



Project team Romania  
 Bogos Ernő Esztáry Győző  
 Péter Alpar Berze Imre  
 Rizmayer Péter Szécsi János  
 Project manager Rodics Gergely  
 Project assistant Balla Melinda

The conversion of the cultural hall of the barn aims to create an interior environment which can be heated. This part of the barn is used by visitors only; thus, it is used for short (2-5 hours) periods and then its unused for days or weeks. It was an important aim to maintain the feel of the barn from both point of views: keep visual contact with its large attic space and keep the wooden surfaces visible. We used the new interventions as an opportunity to place some cultural references in the hall.

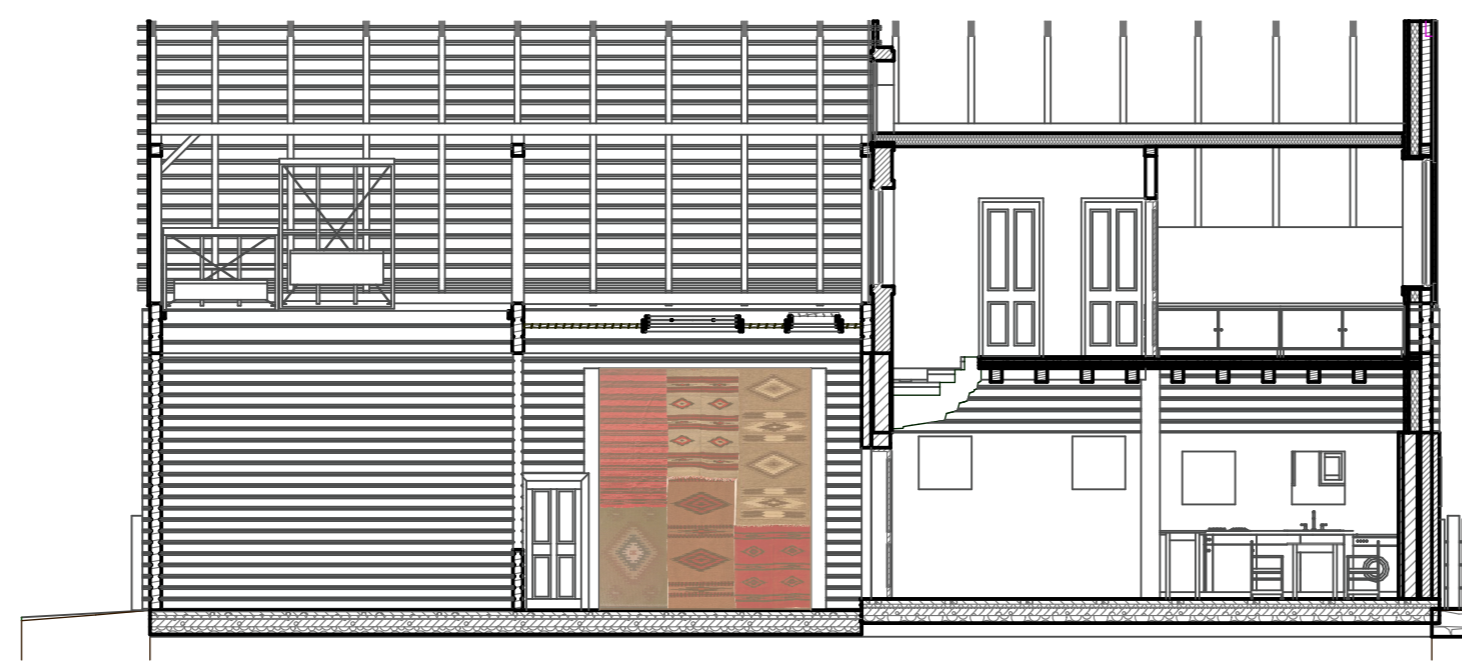
Air tightness of the timber walls is ensured with a nature friendly sealant. We placed a slab or ceiling at the top of the timber walls. The ceiling above the stage section is a foldable wood structure combined with transparent polycarbonate. Its structure follows the pattern of the coffered ceiling of Transylvanian churches (incl. the of Csikdelne) and in some of its rectangular panels infrared electric heaters are installed, decorated with copies of ceiling paintings of Transylvanian churches. The other section of the ceiling is covered with old wooden planks with a few polycarbonate windows to the attic area. The south gate gets a removable wood grid with polycarbonate windows and a door whereas the northern gate - which is hardly used - receives an untransparent cover made of the typical runner rugs of the area. All these elements are easily removable for the summer period apart of the openable slab above the stage.



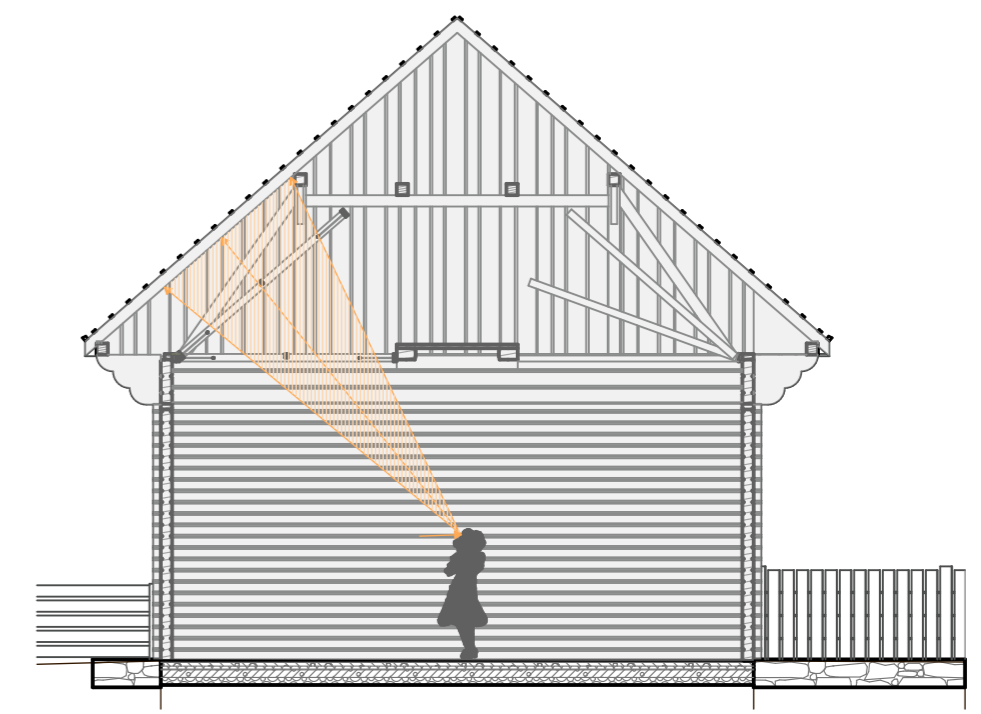
Sun study



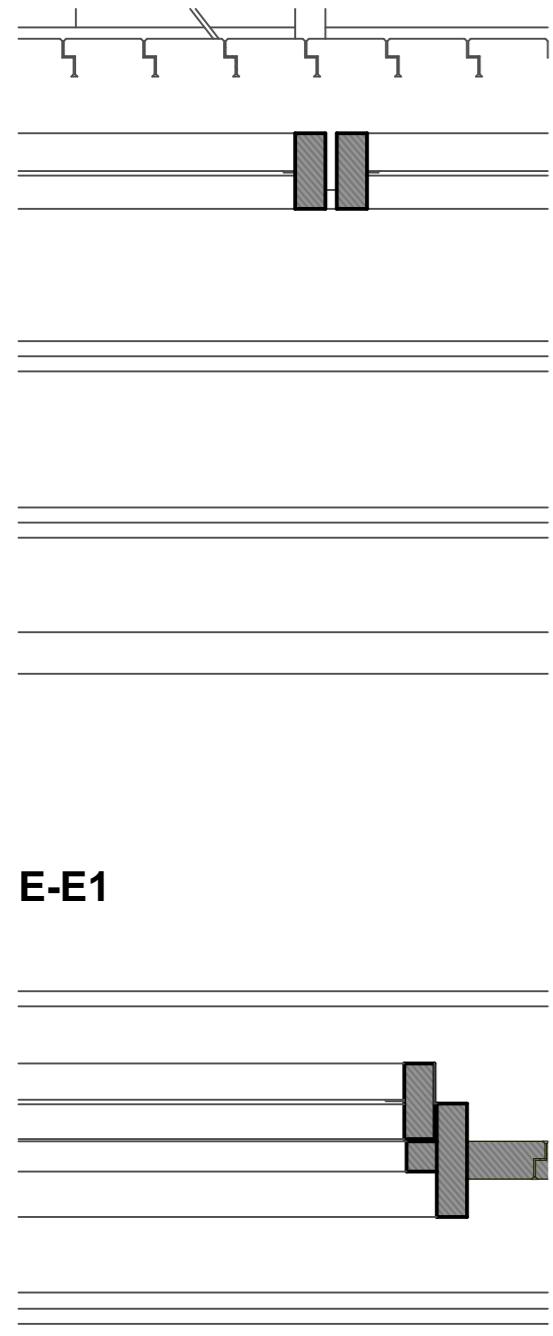
Longitudinal section



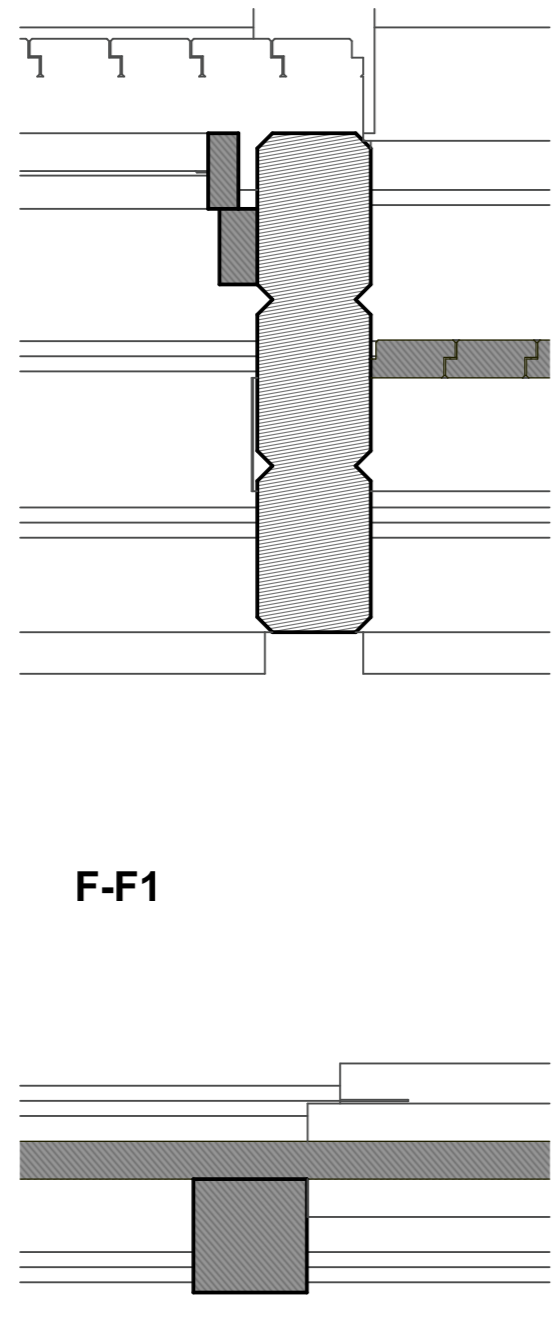
Visibility study



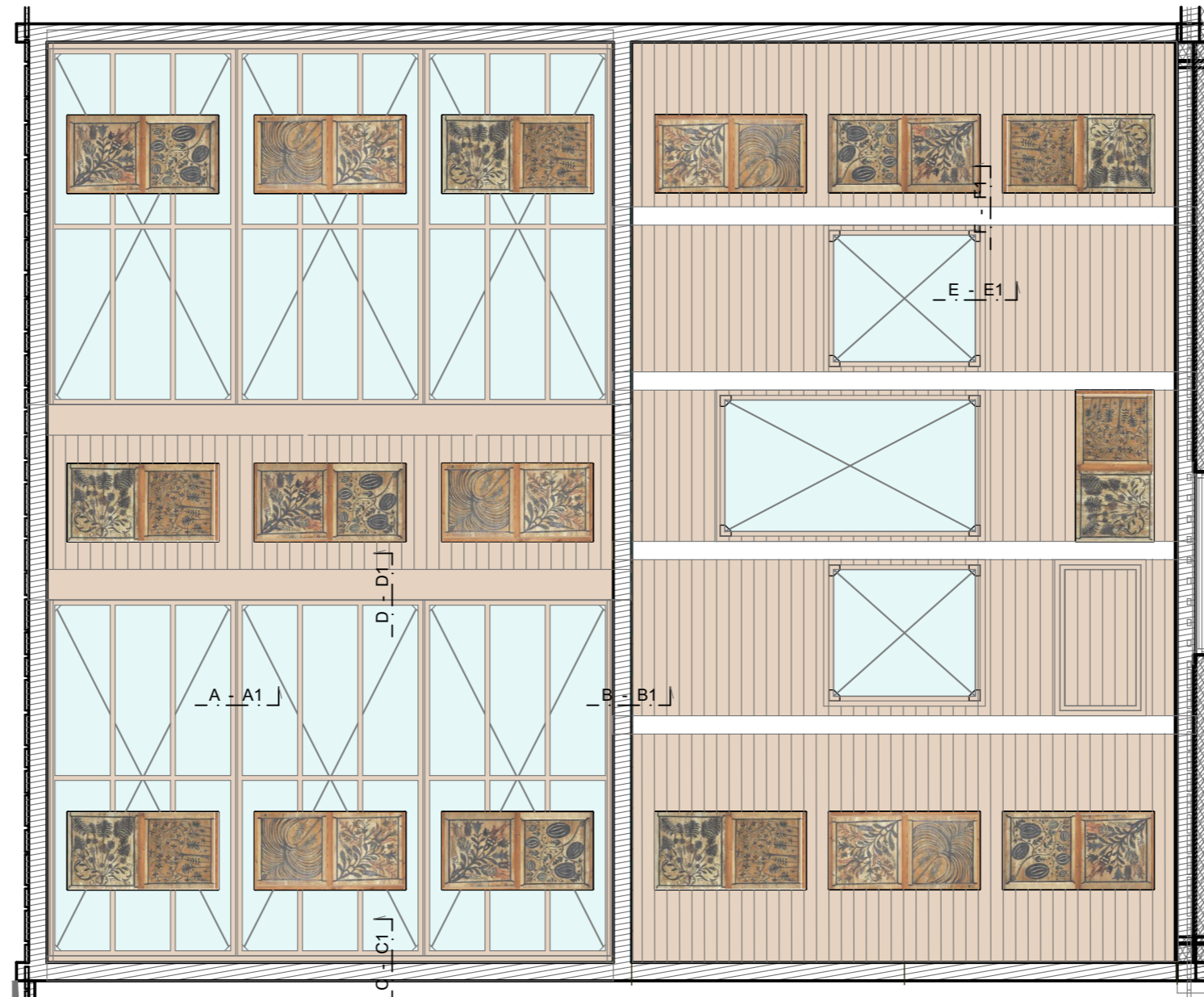
A-A1



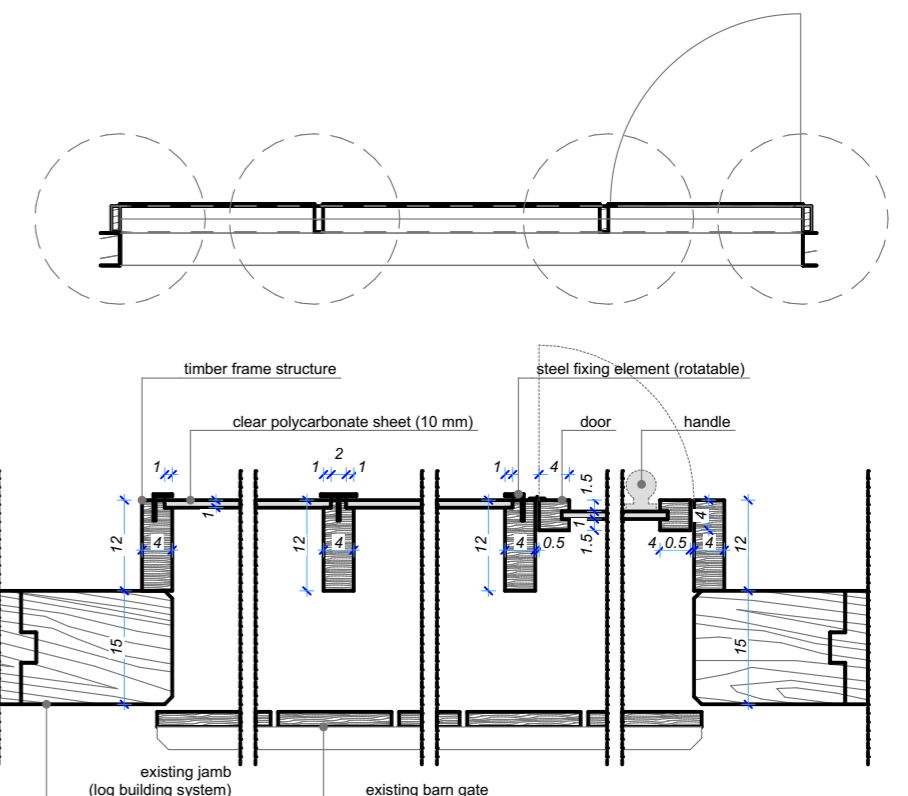
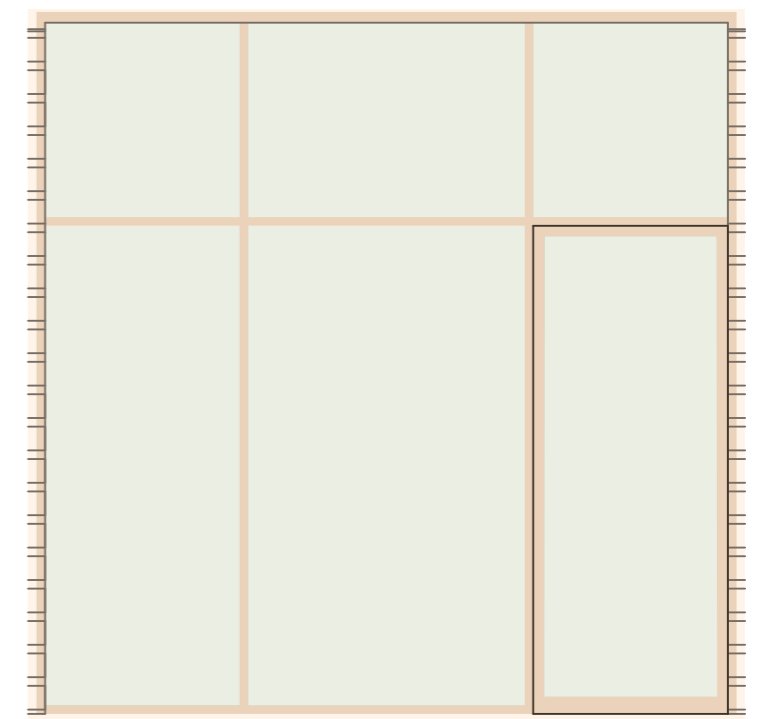
B-B1



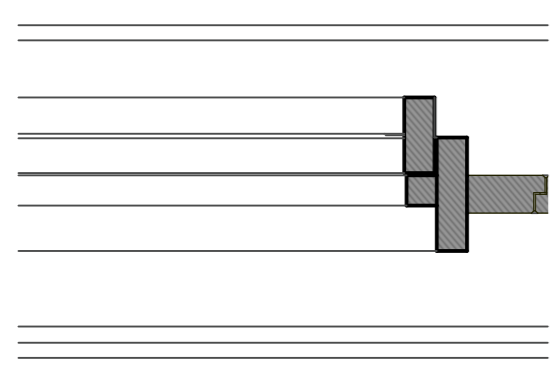
Coffered ceiling layout



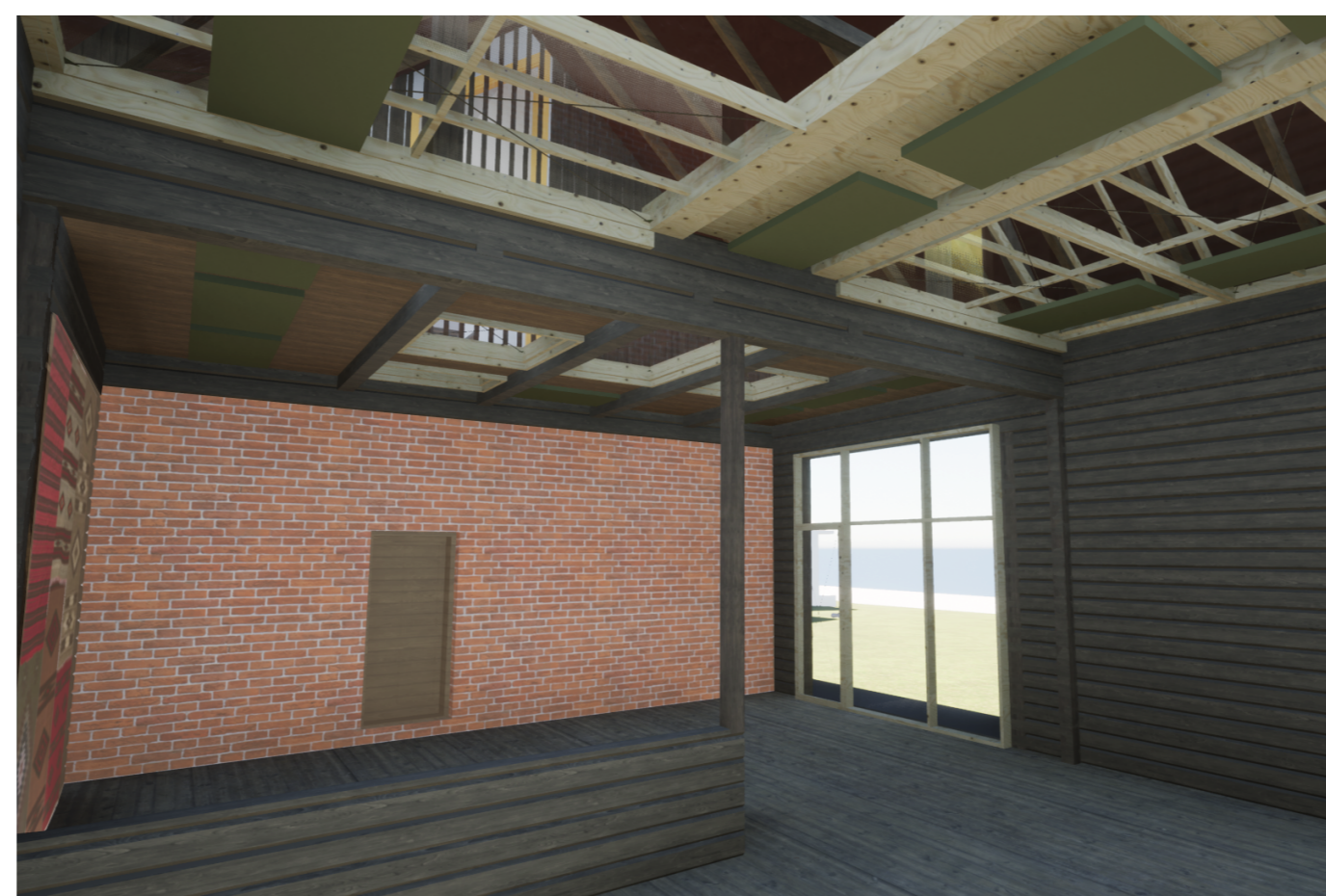
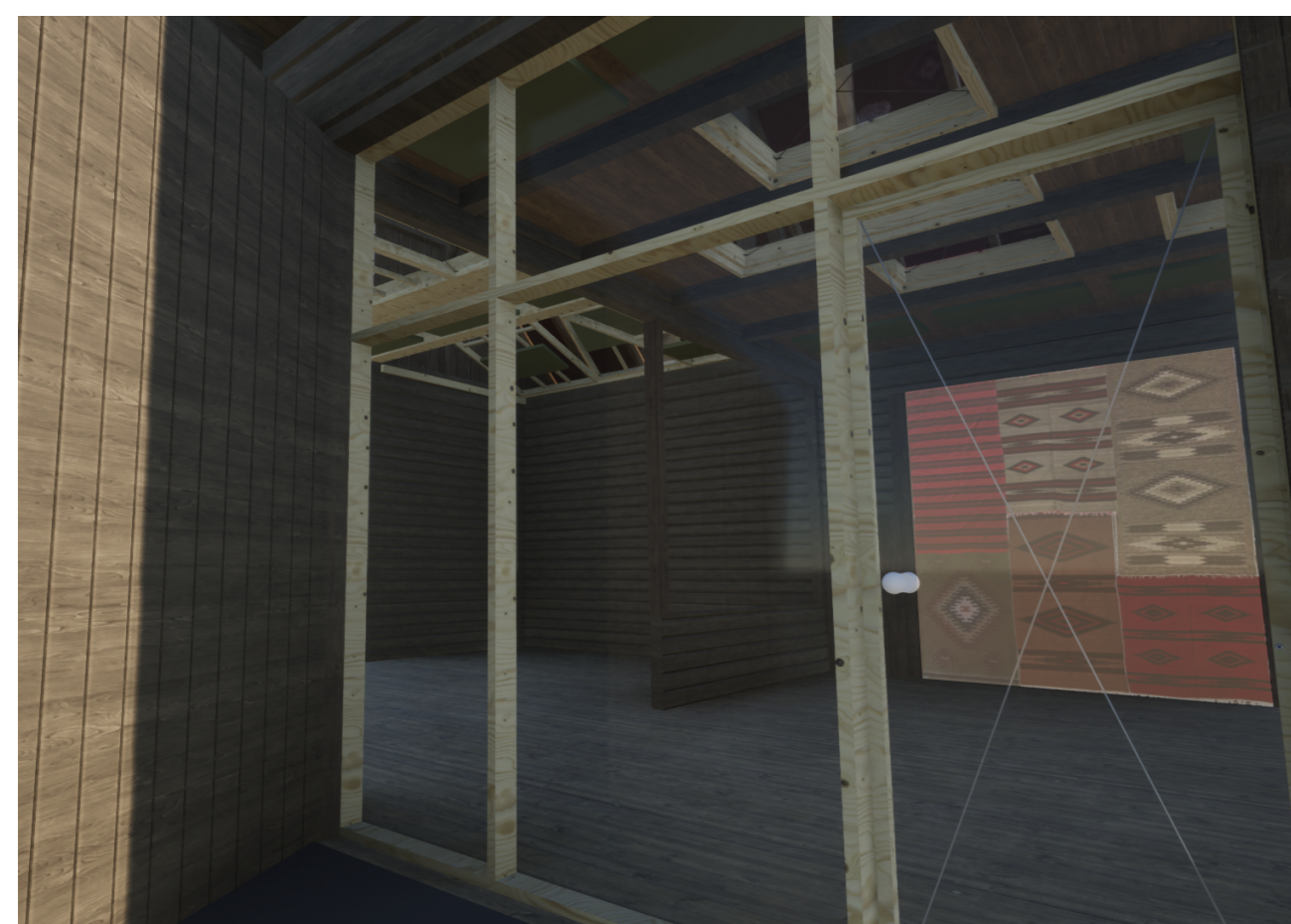
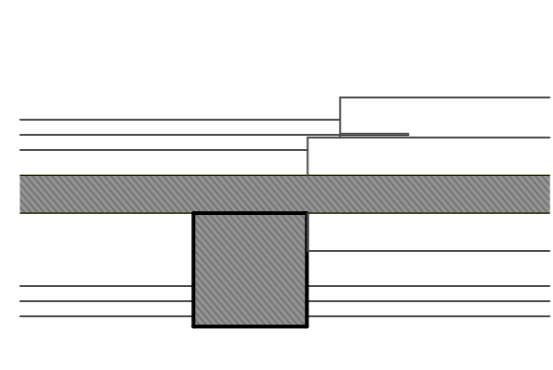
Barn gate details



E-E1



F-F1



Recomandation from the artists

